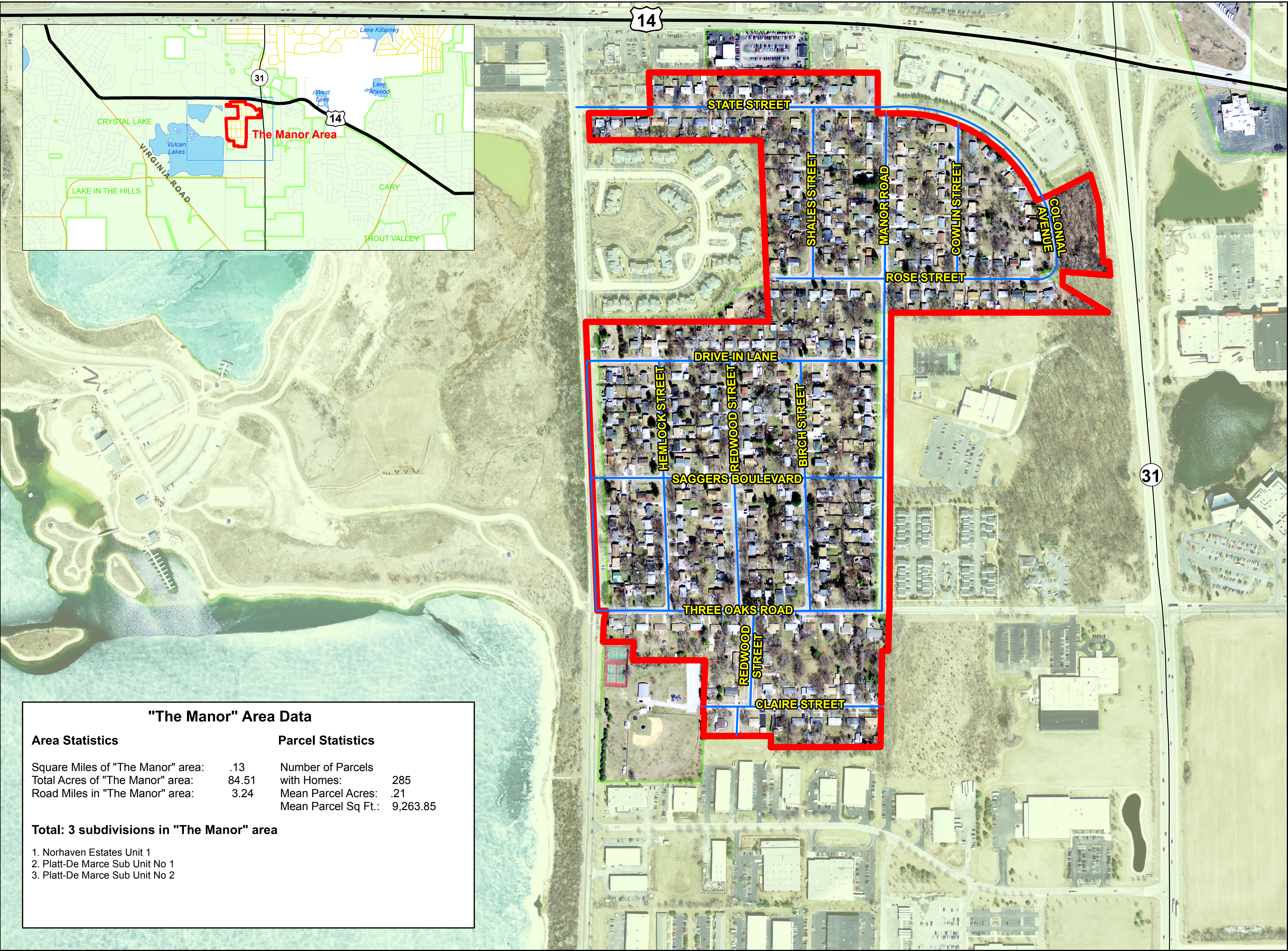


"The Manor" Area



Study Area

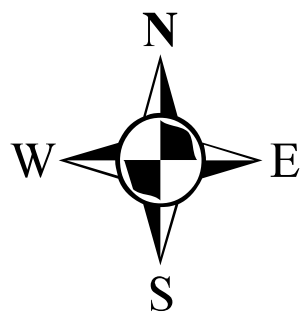
Municipal Boundary

Water bodies (Map Inset)

Road for Road Miles

Roads

- US Route
- State Route
- County
- Township
- Municipality
- Private



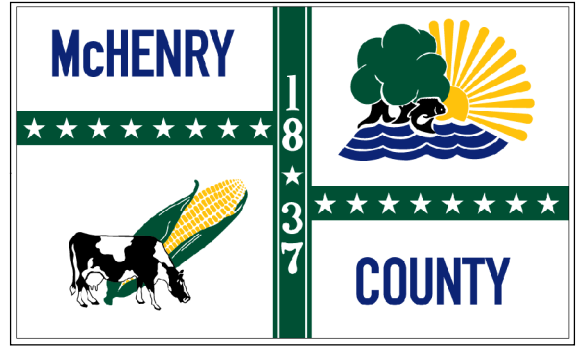
Data Source

Study Areas: McHenry County Health Department

2013 Aerial Orthophotography, Roads, Incorporated Areas, Hydrography, and Area data: McHenry County GIS Department

"The Manor" Area Data			
Area Statistics		Parcel Statistics	
Square Miles of "The Manor" area:	.13	Number of Parcels	
Total Acres of "The Manor" area:	84.51	with Homes:	285
Road Miles in "The Manor" area:	3.24	Mean Parcel Acres:	.21
		Mean Parcel Sq Ft.:	9,263.85
Total: 3 subdivisions in "The Manor" area			
1. Norhaven Estates Unit 1			
2. Platt-De Marce Sub Unit No 1			
3. Platt-De Marce Sub Unit No 2			

INFORMATION ON THIS MAP MAY CONTAIN INACCURACIES OR TYPOGRAPHICAL ERRORS. INFORMATION MAY BE CHANGED OR UPDATED WITHOUT NOTICE. INFORMATION ON THIS MAP IS PROVIDED "AS-IS" WITHOUT WARRANTY OF ANY KIND, EITHER EXPRESS OR IMPLIED, INCLUDING (WITHOUT LIMITATION) ANY IMPLIED WARRANTIES OF MERCHANTABILITY OR FITNESS FOR A PARTICULAR PURPOSE. IN NO EVENT WILL MCHENRY COUNTY BE LIABLE TO YOU OR TO ANY THIRD PARTY FOR ANY DIRECT, INDIRECT, INCIDENTAL, CONSEQUENTIAL, SPECIAL OR EXEMPLARY DAMAGES OR LOST PROFIT RESULTING FROM ANY USE OR MISUSE OF THIS INFORMATION. INFORMATION HEREIN HAS BEEN REPRODUCED FROM ORIGINAL SOURCES. INFORMATION PRODUCED ON THIS MAP SHOULD NOT BE USED IN PLACE OF A SURVEY OR LEGAL DOCUMENTS.



"Fox Lake Vista" Area

Study Area

Municipal Boundary

Water bodies (Map Inset)

Roads for Road Miles

Roads

US Route

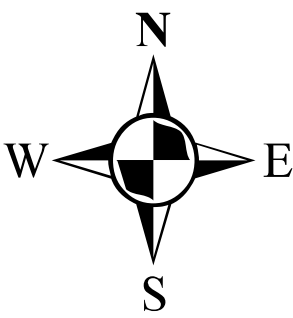
State Route

County

Township

Municipal

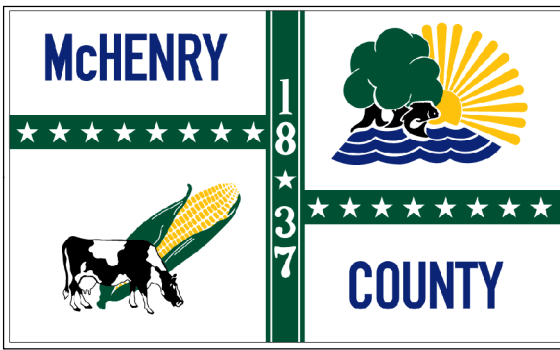
Private



Data Source

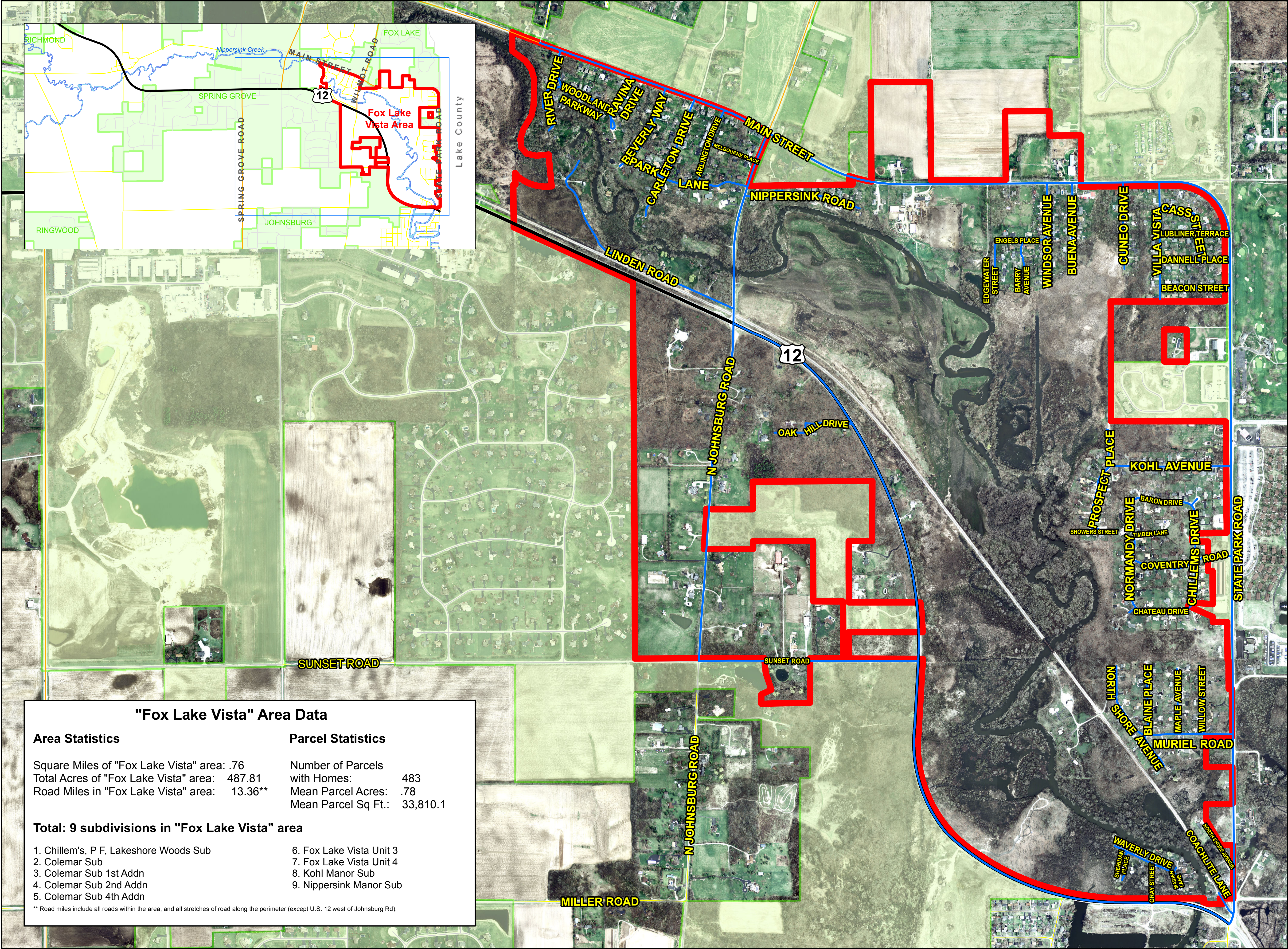
Study Areas: McHenry County Health Department

2013 Aerial Orthophotography, Roads, Incorporated Areas, Hydrography, and Area data: McHenry County GIS Department



Map produced by McHenry County GIS Dept
Date: November 2014

MAP-ID 1000110 - 75 - 110514d



"Fox Lake Vista" Area Data

Area Statistics

Square Miles of "Fox Lake Vista" area: .76
Total Acres of "Fox Lake Vista" area: 487.81
Road Miles in "Fox Lake Vista" area: 13.36**

Parcel Statistics

Number of Parcels with Homes: 483
Mean Parcel Acres: .78
Mean Parcel Sq Ft.: 33,810.1

Total: 9 subdivisions in "Fox Lake Vista" area

1. Chillem's, P F, Lakeshore Woods Sub

2. Colemar Sub

3. Colemar Sub 1st Addn

4. Colemar Sub 2nd Addn

5. Colemar Sub 4th Addn
6. Fox Lake Vista Unit 3

7. Fox Lake Vista Unit 4

8. Kohl Manor Sub

9. Nippersink Manor Sub

** Road miles include all roads within the area, and all stretches of road along the perimeter (except U.S. 12 west of Johnsburg Rd).

INFORMATION ON THIS MAP MAY CONTAIN INACCURACIES OR TYPOGRAPHICAL ERRORS. INFORMATION MAY BE CHANGED OR UPDATED WITHOUT NOTICE. INFORMATION ON THIS MAP IS PROVIDED "AS-IS" WITHOUT WARRANTY OF ANY KIND, EITHER EXPRESS OR IMPLIED, INCLUDING (WITHOUT LIMITATION) ANY IMPLIED WARRANTIES OF MERCHANTABILITY OR FITNESS FOR A PARTICULAR PURPOSE. IN NO EVENT WILL MCHENRY COUNTY BE LIABLE TO YOU OR TO ANY THIRD PARTY FOR ANY DIRECT, INDIRECT, INCIDENTAL, CONSEQUENTIAL, SPECIAL OR EXEMPLARY DAMAGES OR LOST PROFIT RESULTING FROM ANY USE OR MISUSE OF THIS INFORMATION. INFORMATION HEREIN HAS BEEN REPRODUCED FROM ORIGINAL SOURCES. INFORMATION PRODUCED ON THIS MAP SHOULD NOT BE USED IN PLACE OF A SURVEY OR LEGAL DOCUMENTS.

